

All Saints, Alverdiscott, Devon

[Download as PDF](#)

Feature Sets (2)

- [Furnishings](#)

Description

The church comprises nave with S porch, chancel, N aisle, N aisle chapel and W tower. Mainly 15thc. Restored 1863. It has a plain reset 12thc. S doorway to the nave. Romanesque sculpture is found on the font.

History

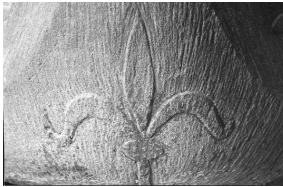
DS records that Alverdiscott belonged to the Count of Mortain, and was held from him by Erchenbald. Before 1066 it was held by Ordwulf.

Features

Furnishings

Fonts

Font



Located at the NW end of the nave.

Modern plinth and support.

The bowl is in the form of a cushion capital, with rosettes at top centre of the shields and lilies at the angles. It appears to have been reduced in height and has modern vertical and diagonal toolmarks.

There is some damage to SW and NW upper angles.

Dimensions

depth of bowl	0.17m
h. of bowl	0.27 m
total h. of font	1.14 m
w. of bowl	0.55 m x 0.54 m

Comments/Opinions

Clarke notes that the heavy tooling on the font is modern and that the bowl has been reduced in height (217).

Bibliography

F. Arnold-Forster, *Studies in Church Dedications: or, England's patron saints*, London, 1899, 31.

K. M. Clarke, 'The Baptismal Fonts of Devon,' part 5, *Transactions of the Devonshire Association*, 51, 1919, 217-8

C. and F. Thorn (eds) *Domesday Book: Devon*, Chichester, 1985, 15, 39.

N. Pevsner and B. Cherry, *The Buildings of England: Devon*, 1952, revised 1989, 123.



Location

Full screen

Site Location

Alverdiscott

National Grid Reference

SS 519 253

Boundaries

now: [Devon](#)

pre-1974 traditional (England and Wales): [Devon](#)

Diocese

now: [Exeter](#)

medieval: [Exeter](#)

Dedication

medieval: [All Saints \(pre-Reformation\)](#)

now: [All Saints](#)

Type of building/monument

[Parish church](#)

Report authors

Hazel Gardiner

Visit Date

20 September 2001