

St Margaret, Fernhurst, Sussex

[Download as PDF](#)

Feature Sets (2)

- [Furnishings](#)

Description

The church was restored in the 19thc., leaving few traces of the medieval structure. Two windows and a buttress on the N side are of 12thc. date. The church contains a Romanesque font.

History

Fernhurst is not mentioned in the Domesday Book. The chancel and nave were built in the 12th century, a S porch added by 1790 (Grimm drawing), and the S aisle, tower and vestry added in 1859 and 1881.

Features

Furnishings

Fonts



Situated at the W end of the S aisle. The cylindrical bowl and stem are set upon a cylindrical plinth and a modern polygonal plinth. The irregularly formed, lead-lined bowl has a pitted, heavily chiselled surface and tapers outwards. Its rim and base are ringed by plain torus mouldings, the upper one of which is damaged to the SW, possibly due to the removal of a lock. The stem has a slightly smaller diameter than the bowl, and incorporates a shallow off-set, suggestive of an integral plinth. The upper plinth, which is chamfered at the top, is more regular than the bowl and stem and may post-date the 12thc. Surface irregularities, however, argue against a modern date.

Dimensions

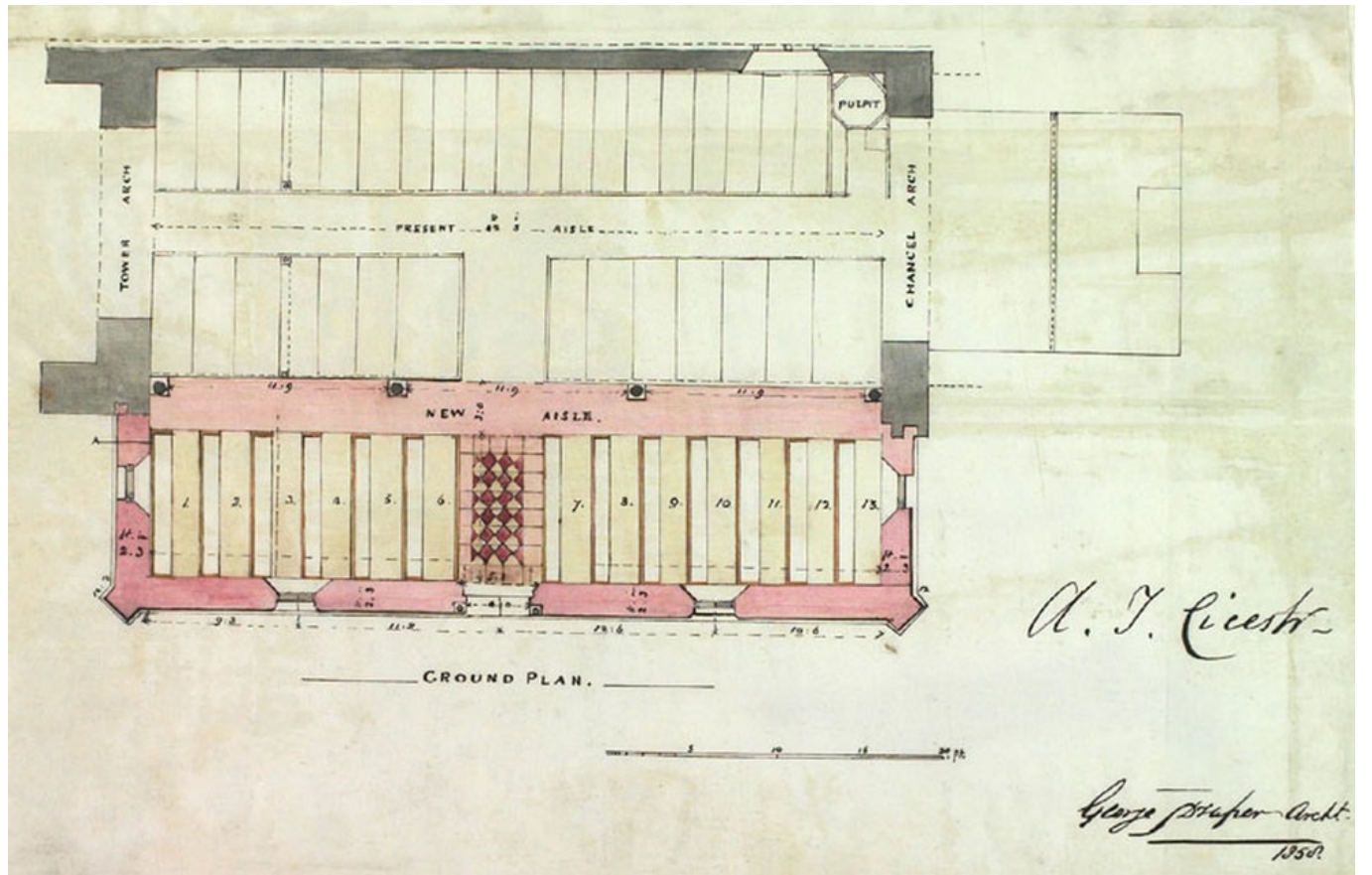
circ. at bottom of bowl	2.35 m
circ. at top of bowl	2.39 m
ext. diam.	0.75 m
h. (excl. upper plinth)	0.57 m
h. (incl. upper plinth)	0.90 m
int. diam.	0.51 m

Comments/Opinions

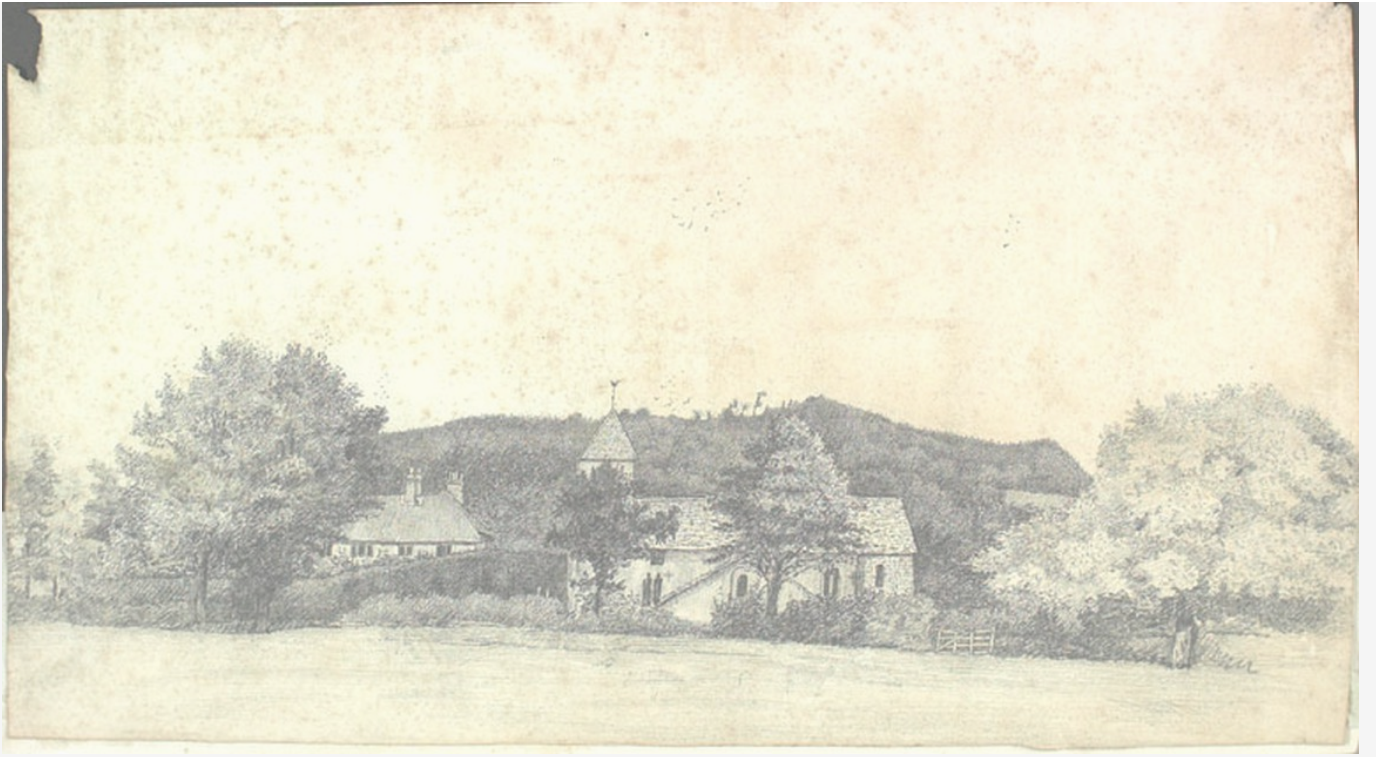
Bibliography

Victoria County History: Sussex. 4 (Chichester Rape) 1953, 56-57, with plan.

I. Nairn and N. Pevsner, *The Buildings of England: Sussex*. Harmondsworth 1965, 220 (no mention of font).



Church Plan



Church Plan

Location

Full screen

Site Location

Fernhurst

National Grid Reference

SU 899 285

Boundaries

pre-1974 traditional (England and Wales): [Sussex](#)

now: [West Sussex](#)

Diocese

medieval: [Chichester](#)

now: [Chichester](#)

Dedication

medieval: [St Margaret \(1520\)](#)

now: [St Margaret](#)

Type of building/monument

[Parish church](#)

Report authors

Kathryn Morrison